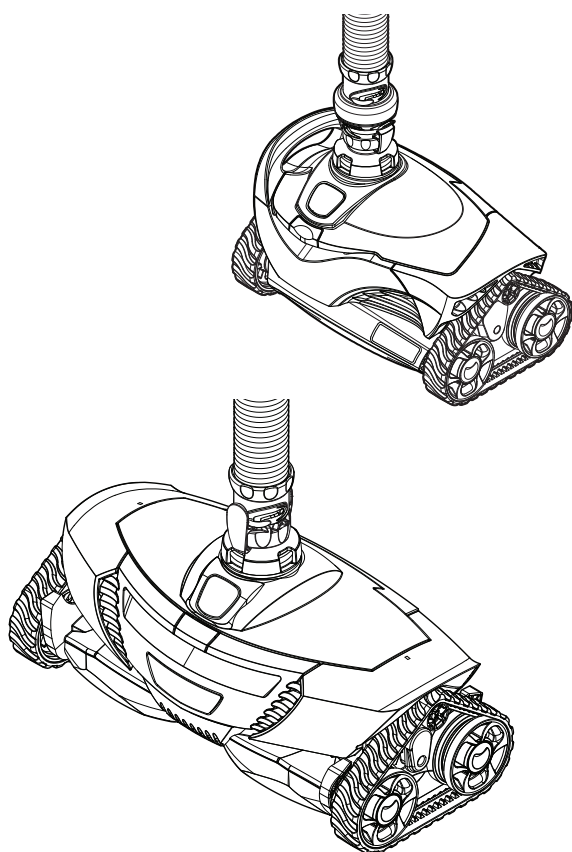


**MX™ 6**

**MX™ 630**

**MX™ 8**

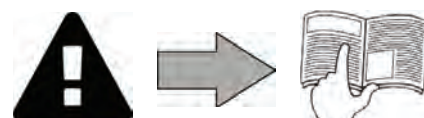
**MX™ 8 PRO**



Instructions for installation and use  
English

**EN**

More documents on:  
[www.zodiac.com](http://www.zodiac.com)





- Before you do anything with the device, it is vital that you read this installation and user manual, as well as the "warnings and warranty" booklet delivered with the device. Failure to do so may result in material damage or serious or fatal injury and will invalidate the warranty.
- Keep and pass on these documents for later consultation during the device's life time.
- It is prohibited to distribute or modify this document in any way without authorisation from Zodiac®.
- Zodiac® is constantly developing its products to improve their quality; therefore, the information contained in this document may be modified without notice.

## CONTENTS



### 1 Specifications

2

1.1 | Description

2

1.2 | Technical specifications and marking

3



### 2 Installation

4

2.1 | Setup

4

2.2 | Hose section assembly

4

2.3 | Hydraulic connection

5



### 3 Use

7

3.1 | Operating principle

7

3.2 | Pool preparation

7

3.3 | Operating

7

3.4 | Adjusting the water flow

8

3.5 | Choice of suction mode: small or large debris (according to model)

9



### 4 Maintenance

10

4.1 | Cleaning the filtration pump pre-filter

10

4.2 | Cleaning the "Cyclonic™" Leaf Catcher

10

4.3 | Removing debris from the motor

11

4.4 | Replacing the tracks

11

4.5 | Storage and wintering

12



### 5 Troubleshooting

12

5.1 | Device behaviour

12



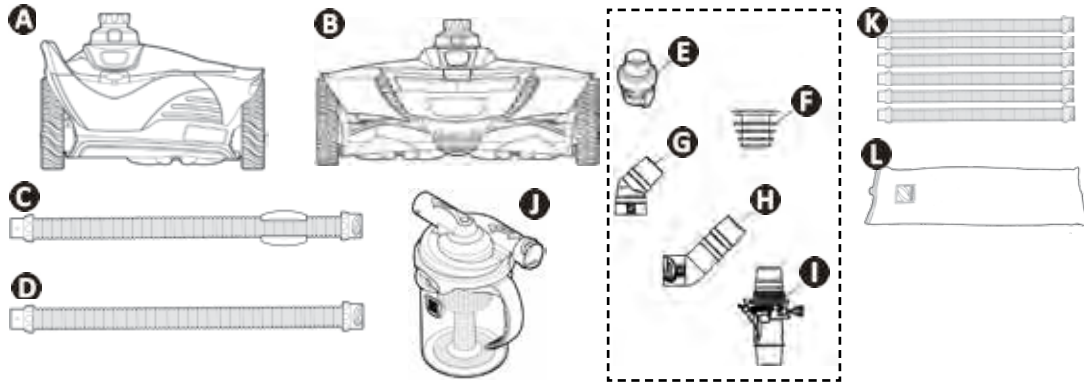
#### **Tip: to make it easier to contact your reseller**

Write down your reseller's contact details to help you find them more easily and fill in the "product" information on the back of the manual; your reseller will ask you for this information.



# 1 Specifications

## 1.1 I Description



		MX™ 6 - MX™ 630	MX™ 8	MX™ 8 PRO
A	Cleaner	✓		
B			✓	✓
C	1 metre section of hose with floater (x1)	✓	✓	✓
D	1 metre section of hose	✓ (x9)	✓ (x11)	✓ (x11)
E	Flow regulator (for the cleaner)	✓	✓	✓
F	Conical adaptor	✓	✓	✓
G	45° elbow	✓	✓	✓
H	Rotating 45° extended elbow	✓	✓	✓
I	Flow regulation valve	✓	✓	✓
J	"Cyclonic™" Leaf Catcher	+	+	✓
K	Set of 6 1-metre sections of hose	+	+	+
L	Wintering bag for hoses	+	+	+

✓: Supplied

+: Available as an option

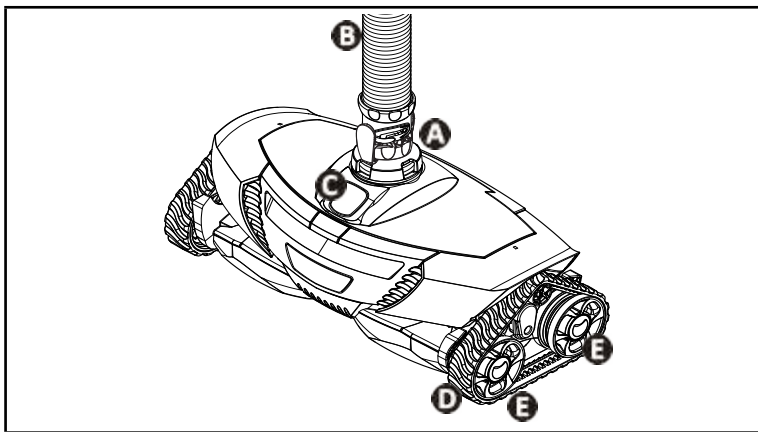
EN

## 1.2 I Technical specifications and marking

### 1.2.1 Technical specifications

	MX™ 6 - MX™ 630	MX™ 8	MX™ 8 PRO
Cleaner size (L x W x h)	31 x 19 x 22 cm	41 x 19 x 22 cm	
Package size (L x W x h)	102 x 23 x 37 cm		
Cleaner weight	2.5 kg	3.2 kg	
Packaged weight	8.2 kg	9.5 kg	10.5 kg
Theoretical cleaning width	25 cm	36 cm	
Filtration capacity	Pool filtering circuit		
Minimum powered required for the filtering pump.	3/4 HP		
Movement speed	8 m/ min		

### 1.2.2 Marking

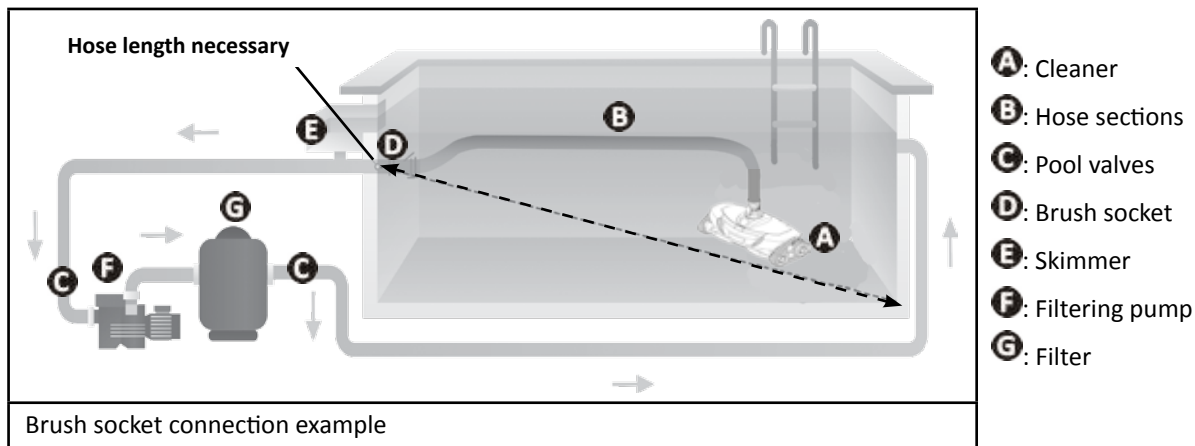


- A**: Flow regulator
- B**: Hose section
- C**: Cover opening button
- D**: Tracks
- E**: Wheels



## 2 Installation

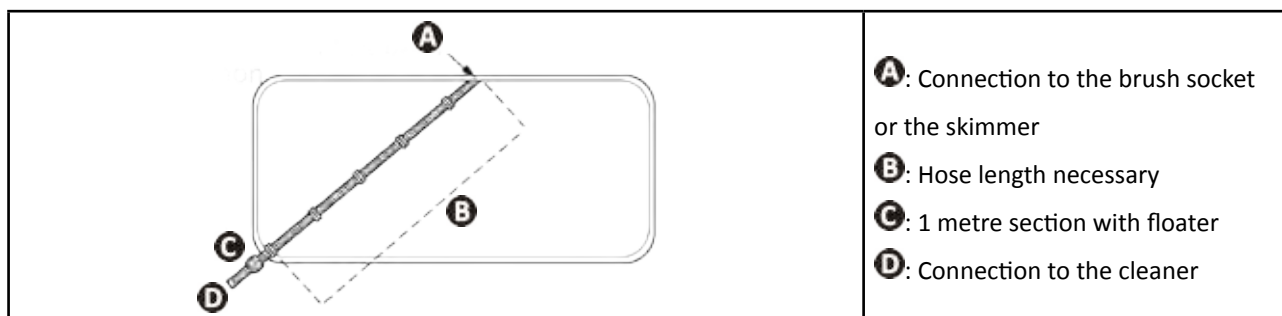
### 2.1 I Setup



### 2.2 I Hose section assembly

#### 2.2.1 Determine the number of sections you need

- Measure the length between the brush socket or the skimmer and the furthest away point of the pool.
- Add an extra 1 metre to the length measured.
- If its total length is over 10 metres (MX<sup>TM</sup>6-MX<sup>TM</sup>630) or 12 metres (MX<sup>TM</sup>8-MX<sup>TM</sup>8 PRO), ask your reseller for an additional set of hose sections (available as an option).

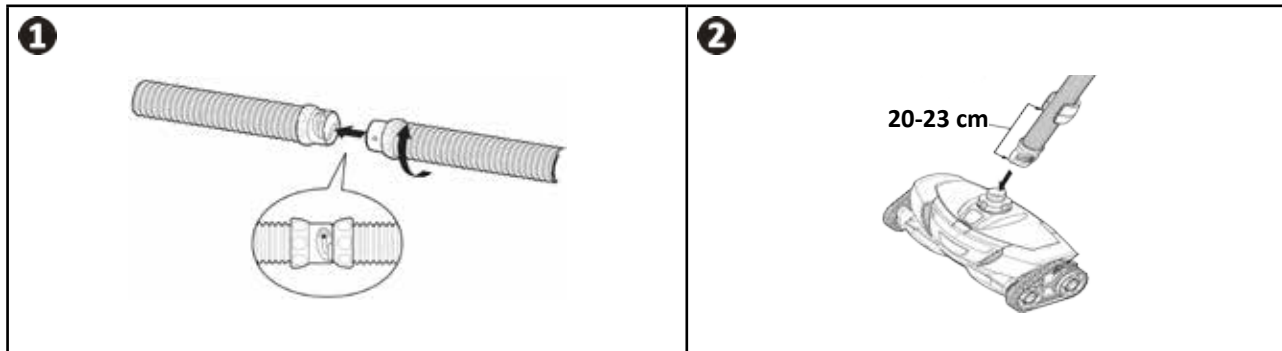


#### **Tip: insert the "right" quantity of hose sections**

Inserting more hose sections than the length necessary to cover the whole pool is not recommended. Hoses that are too long may limit the cleaner's performances.

#### 2.2.2 Hose section assembly

- To assemble two hose sections, insert them then turn them until the connectors are at the maximum stop point, in one of the 3 notches that provide the seal (see image 1).
- The section of hose that comprises the floater will be connected to the cleaner. The floater must be located **20-23 cm away from the cleaner**. (see image 2).

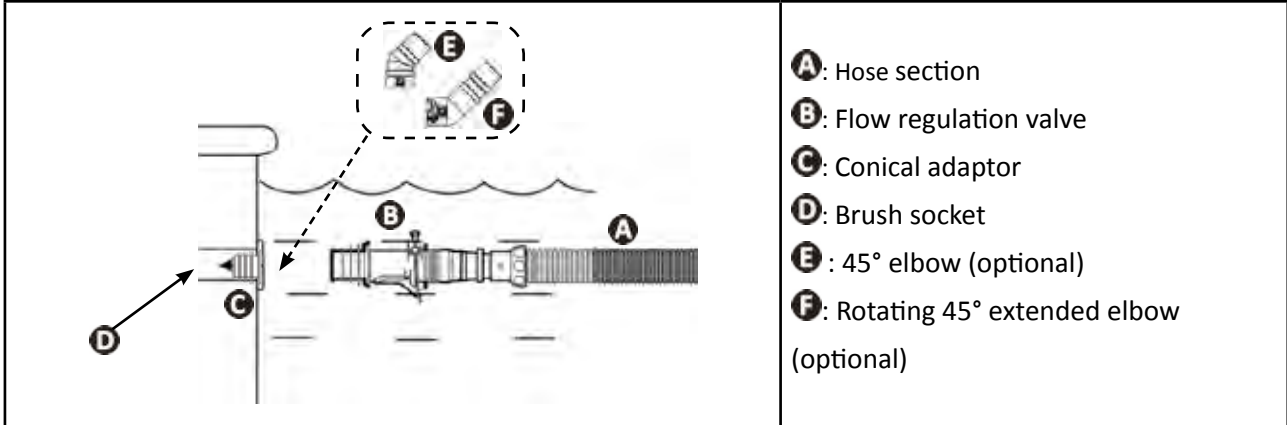


## 2.3 I Hydraulic connection



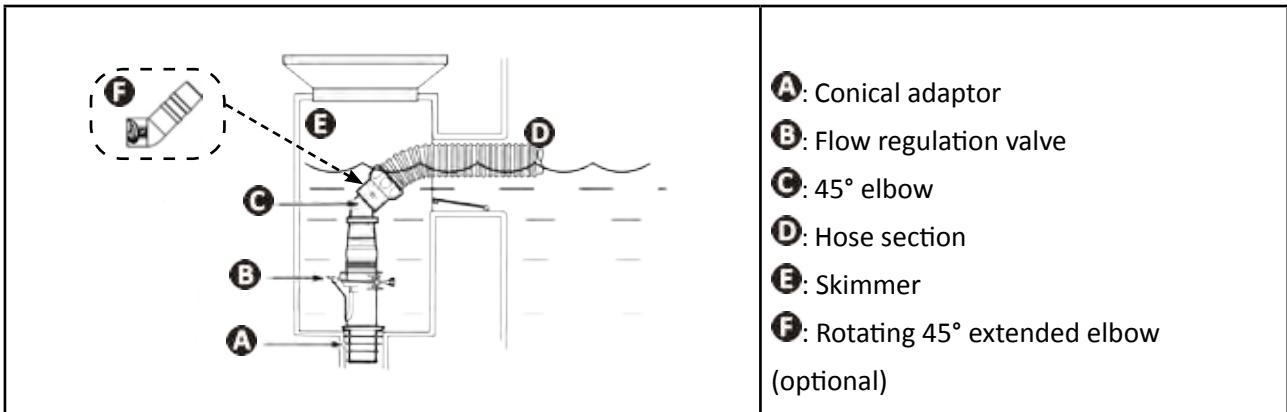
- Stop the filtration pump.
- Clean the skimmer basket, the filtration pump pre-filter and the filter if necessary.

### 2.3.1 Connection to the brush socket



### 2.3.2 Connection to the skimmer

- If the pool has more than one skimmer, connect the pipe to the one which is the closest to the filtration pump.

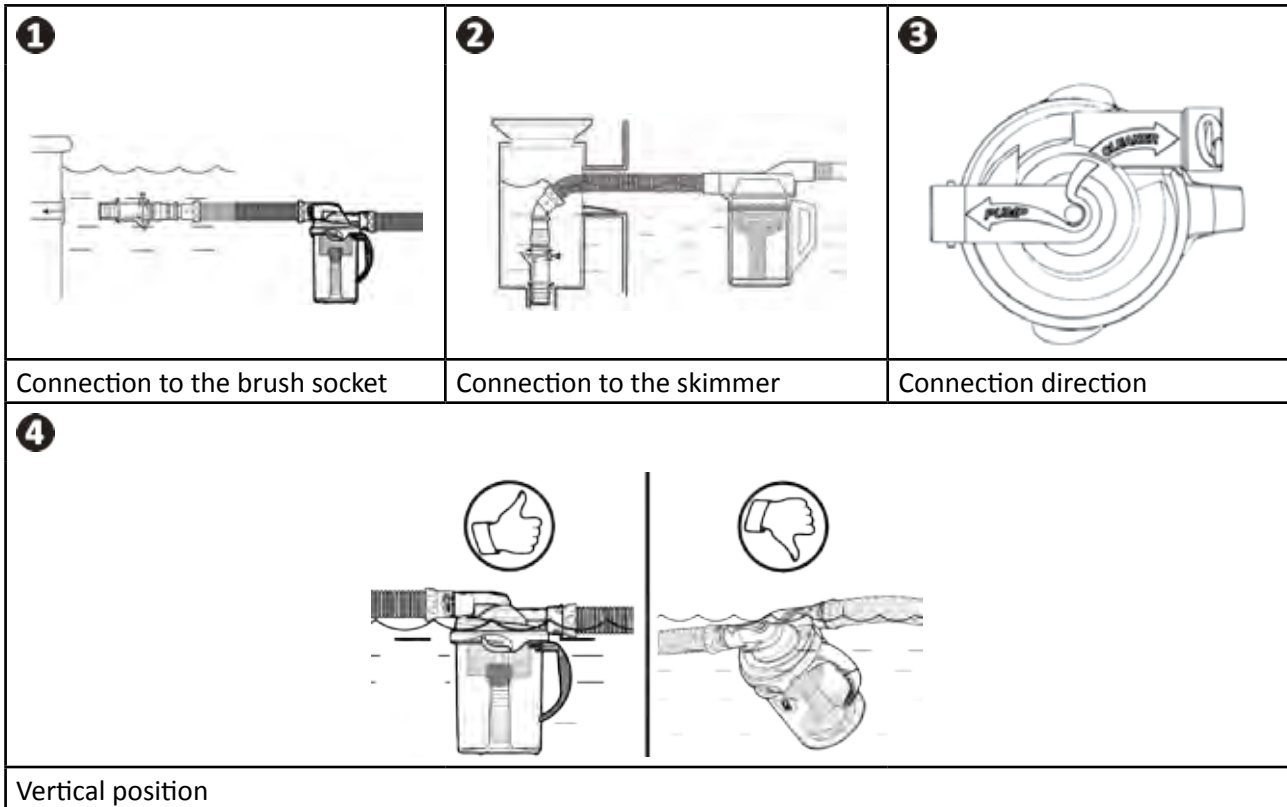


**Tip: Protect the filtration system by connecting the flow regulation valve**

This valve is used to adjust the flow to optimise the cleaner's performance; it is also very useful for retaining any debris that may be sucked in and damage the filtration equipment.

### 2.3.3 "Cyclonic™ Leaf Catcher" connection (according to model)

- Connect the leaf catcher to the hose which is closest to the brush socket or the skimmer (see image ① or ②).
- Tilt the leaf catcher by following the indications: "PUMP" = filtration pump side / "CLEANER" = cleaner side (see image ③).
- For the bet operation, position the leaf catcher vertically to the water surface (see image ④).



**Tip: Protect the filtration system by connecting the flow leaf catcher**

The leaf catcher is used to retain the debris before it is sucked into the filtration system as this may cause long-term damage to the equipment. It also enables the debris to be removed more easily than in the pump pre-filter, and has the advantage that it is transparent so you can see when it needs to be cleaned.



## 3 Use

### 3.1 | Operating principle

The hydraulic cleaners connect to the filtration system (either to a brush socket or a skimmer); they use the filtration pump's energy to move around the pool randomly. The side climbing capacity varies according to the shape of the pool and the available water flow.

The debris is sucked in by the cleaner and captured in the filtration pump's pre-filter or in the leaf catcher (accessory included or available as an option depending on the model).

### 3.2 | Pool preparation

- The device must operate in pool water with the following quality:

<b>Water temperature</b>	Between 15°C and 35°C
<b>pH</b>	Between 6.8 and 7.6
<b>Chlorine</b>	< 3 mg/l

- When the pool is dirty, especially when commissioning, remove the largest debris using a net in order to optimise the device's performances.
- Remove any thermometers, toys and other objects that might damage the device.
- After adding chemical products to the water, wait at least 4 hours before putting the cleaner into the water.
- Make sure that the filtration and the skimmer baskets are clean.
- Tilt the discharge nozzles down to provide full coverage for the pool.
- Close your pool's bottom plug.
- Stop the filtration pump.

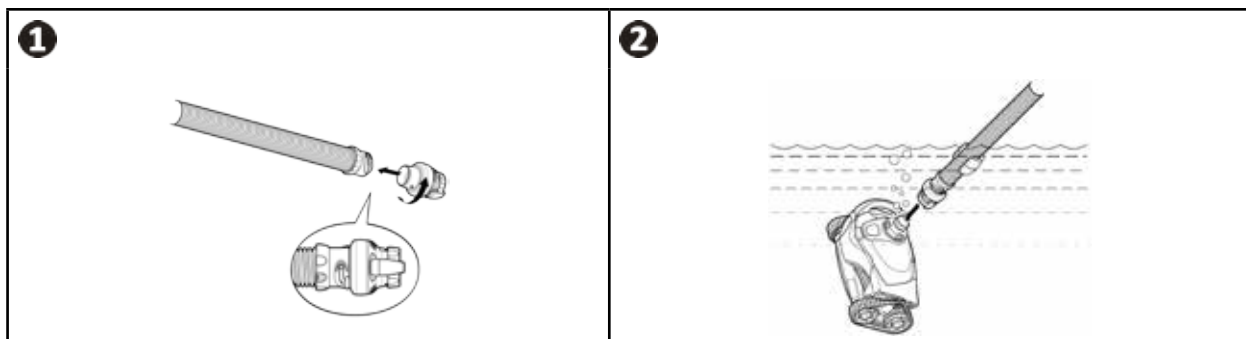
### 3.3 | Operating



- To avoid serious injury, make sure that the filtration pump is stopped.
- Do not expose your hair, loose clothing, jewellery, etc. to the open end of the hose.

#### 3.3.1 Connecting the flow regulator and immersing the cleaner

- Insert the section of hose which comprises the floater onto the flow regulator (see image ①).
- Immerse the cleaner so that it fills up with water.
- When there are no more air bubbles escaping from the cleaner, connect the hose by inserting the flow regulator onto the cleaner (see image ②).
- Wait until the cleaner descends to the bottom of the pool.



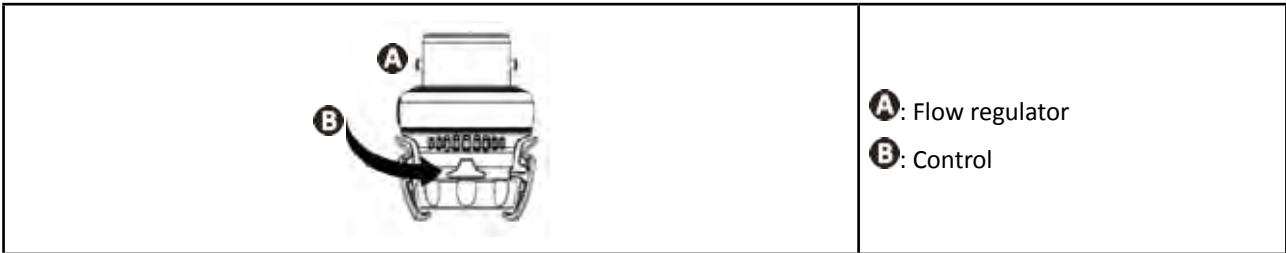
#### 3.3.2 Filling the hoses

- Disconnect the hose to the brush socket or skimmer temporarily.
- Start the filtration pump.
- Fill the water hose by placing the end in front of a discharge nozzle until it is completely filled.
- Stop the filtration pump and connect the hose to the brush socket or skimmer again.
- Start the pump to activate the cleaner.



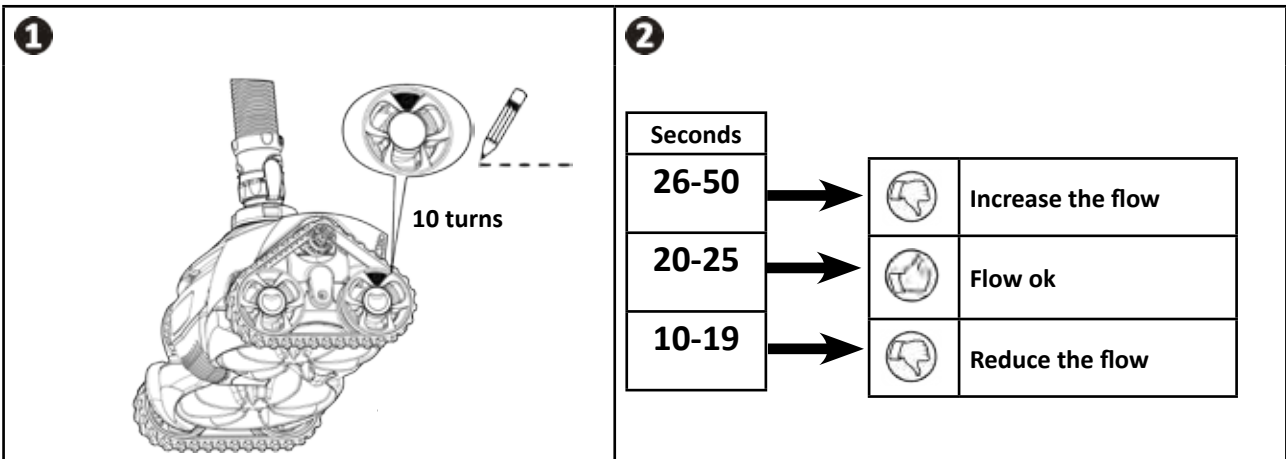
### 3.4 I Adjusting the water flow

- The filtration pump must be operating.
- Check the water flow regularly to ensure the best possible cleaning performance and to make it easier for the cleaner to climb the sides.
- The cleaner is equipped with a flow regulator which automatically adjusts the water flow through the cleaner. It indicates whether the water flow is ok or excessive: **YELLOW** = flow ok / **RED** = flow excessive



#### 3.4.1 Checking the wheel rotation speed

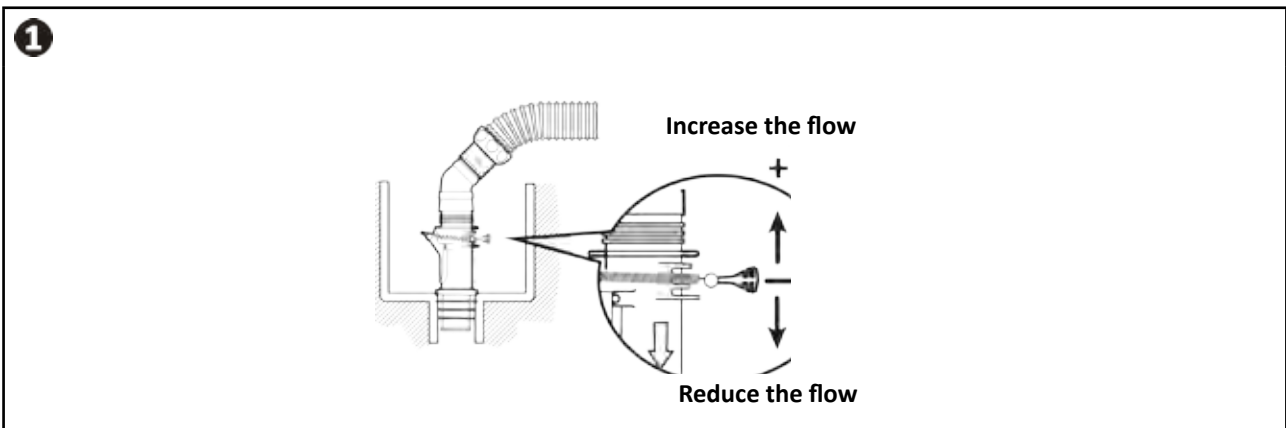
- The filtration pump must be operating.
- Switch on the filtration pump (have a stopwatch ready).
- Raise the cleaner to below the surface of the water, keeping it submerged.
- Note the yellow indicator on the rear right wheel.
- For MX8-MX8 PRO: Wait until the wheels change direction and log the time until the wheels have performed 10 turns (see image 1).
- Adjust the water flow according to the time logged (see image 2).



EN

#### 3.4.2 Adjusting the water flow

- Adjust the water flow using the flow regulation valve provided with the device (see image 1), or from the pool valves.



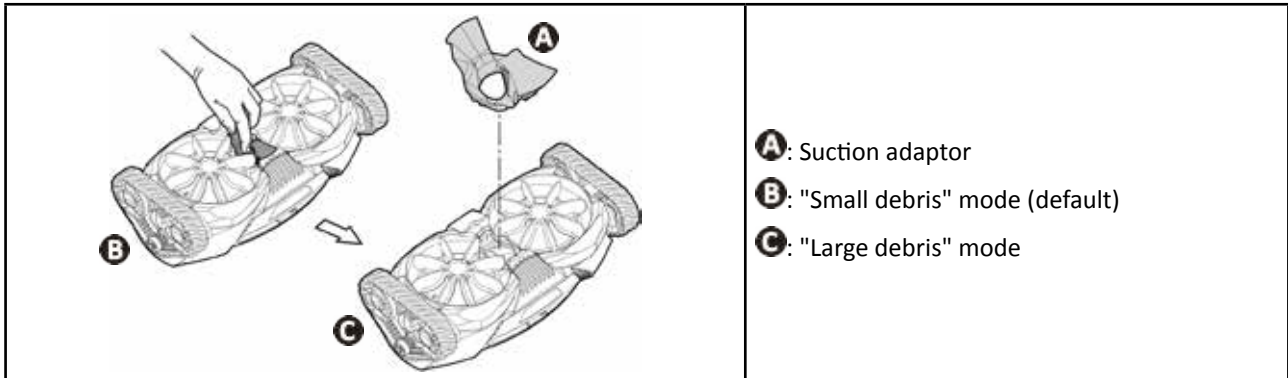
### 3.5 I Choice of suction mode: small or large debris (according to model)



Before starting this operation and to avoid serious injury:

- Stop the filtration pump.
- Disconnect the cleaner from the hose.

- The cleaner has a suction adaptor; it is located under the cleaner.
- The adaptor enables the suction to be adjusted according to the type of debris to be dealt with: **"small debris" mode** (small or heavy debris such as sand, silt and stones), **"large debris" mode** (leaves).
- **To switch to "large debris" mode:** remove the adaptor by inserting a finger into it and raising the rear edge.
- **To return to "small debris" mode:** press the front and rear edges of the adaptor to clip it into its housing.



**Tip: It is best to use "small debris" mode during the bathing season**

When the pool is cleaned regularly, we recommend that you leave the suction adaptor in place to be in "small debris" mode.



## 4 Maintenance

- The device must be cleaned regularly using clean or slightly soapy water. Do not use any solvents.
- Rinse the device generously using clean water.
- Do not let your device dry in the sun by the pool.

### 4.1 I Cleaning the filtration pump pre-filter

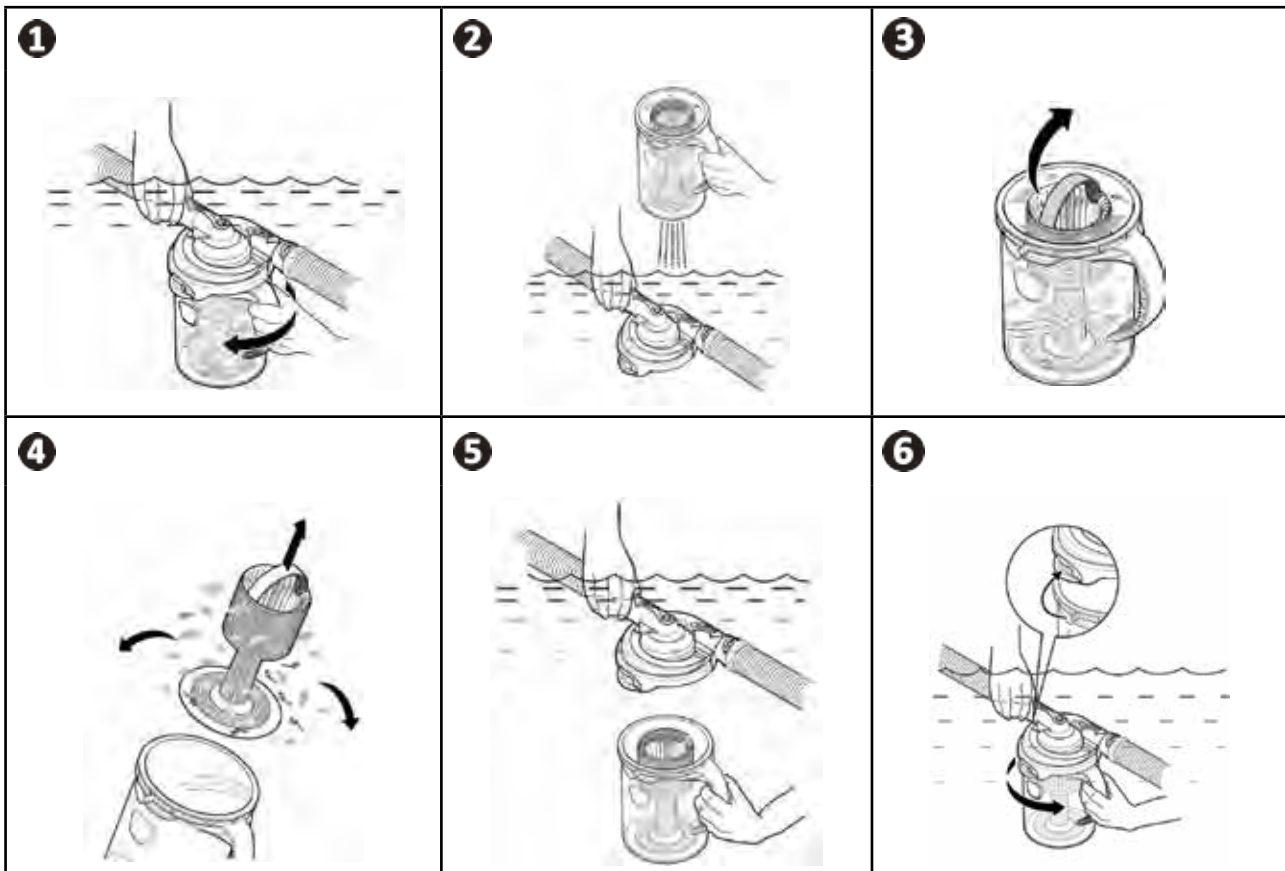


- Always remove the cleaner from the pool before cleaning or bleeding the filtration system.
- Before cleaning (and before you put the cleaner back into the water), start the filtration pump for at least 5 minutes before you bleed the circuit.

- For maximum cleaner effectiveness, you must drain the pump's pre-filter regularly.
- Use of the leaf catcher (accessory included or optional depending on the model) is recommended to collect large debris before it reaches the skimmer and the pre-filter.

### 4.2 I Cleaning the "Cyclonic™" Leaf Catcher

- Stop the filtration pump.
- Keep the leaf catcher under the water and take hold of it by the handle. Using the handle, turn the transparent tank until it detaches (see image 1).
- Remove the transparent tank from the water and leave the lid and the hoses under the water (see image 2).
- Remove the filter using the top handle (see image 3).
- Remove the debris and rinse the transparent tank in clean water (see image 4).
- Put the filter back in place and immerse the leaf catcher again (see image 5).
- Position the transparent tank correctly on the lid notches then turn it sharply to push the 2 parts in (see image 6).



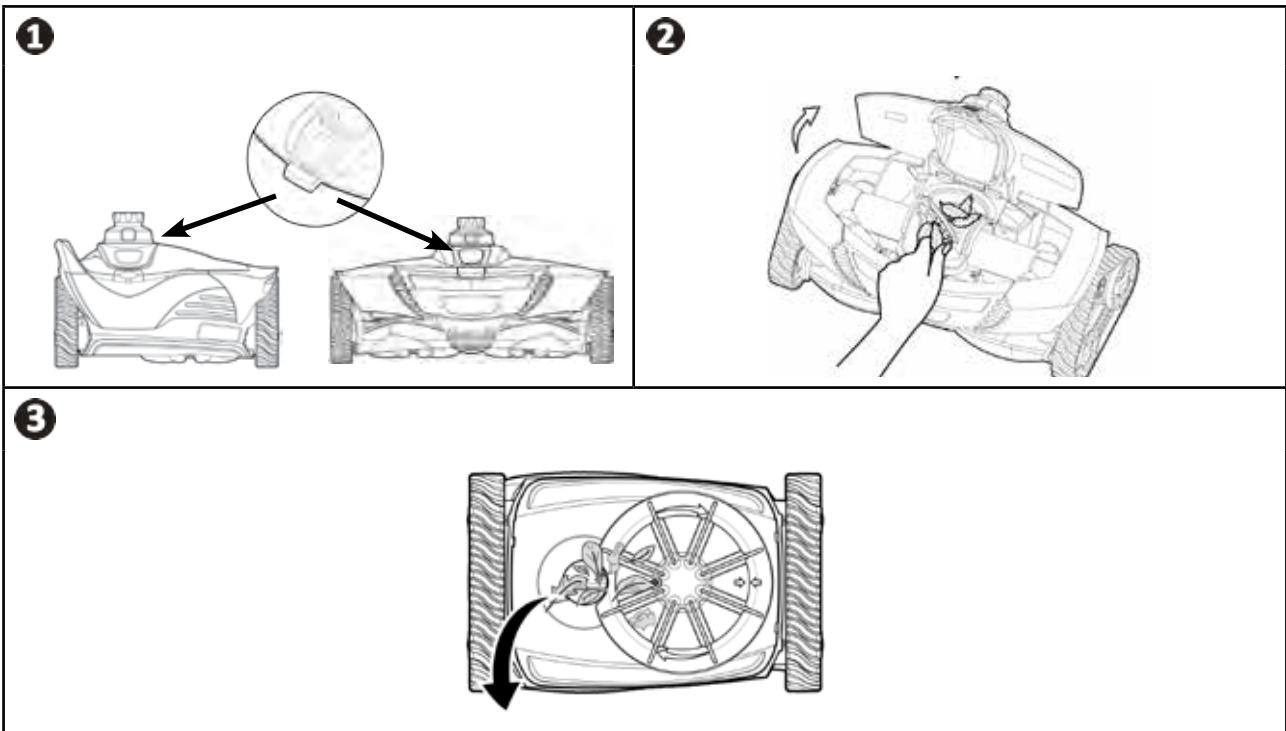
### 4.3 I Removing debris from the motor



Before starting this operation and to avoid serious injury:

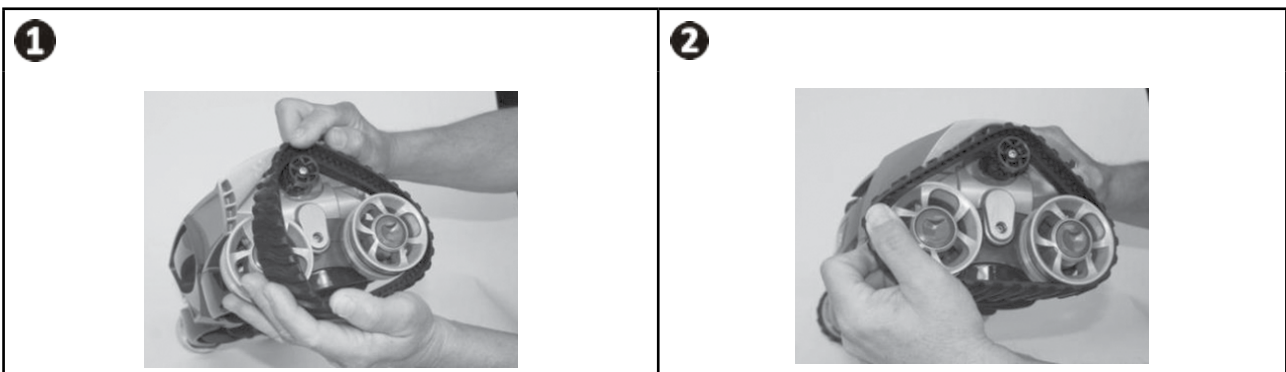
- Stop the filtration pump.
- Disconnect the cleaner from the hose.

- Press the button on the top and lift the lid (see image 1).
- Remove the debris inside (see image 2) and also under the cleaner (see image 3).
- If necessary, gently push the motor blades forward and backward to reveal any trapped debris and remove it. When you move the blades, make sure that the cleaner's tracks turn freely and that they are correctly synchronised with the movement of the blades under the cleaner.
- Also remove any debris which may be caught in the suction inlet.
- Close the lid and make sure it locks.



### 4.4 I Replacing the tracks

- Lay the cleaner on one side.
- Starting with one of the wheels, pull the inside of the track to separate it from the wheel (see image 1). Then remove the track from the cleaner.
- To install the new track, position the inside of the track on the small wheel's grooves and on one of the large wheels.
- Stretch the track around the second wheel, (see image 2). Press down on the track to position it correctly on the wheel grooves. Make sure that the track passes under the guide.



## 4.5 I Storage and wintering

- For wintering, drain off all the water from the cleaner (damage caused by frost is not covered by the warranty).
- Clean the whole device and the hoses in clean water then leave to dry.
- Store them in a dry place protected against frost
- Remove all the connectors and adaptors from the brush socket or the skimmer.
- Remove the hose sections. Check that the hoses are not blocked and store them flat.



**Tip: Preserve the condition of the hoses during storage**

When the cleaner is stored away, even for short periods, avoid rolling the hoses: they may take on a shape which may harm the cleaner's performances.



## 5 Troubleshooting



- Before you contact your reseller, please carry out these few simple checks using the following tables if a problem occurs.
- If the problem continues contact your reseller.

### 5.1 I Device behaviour

EN

The cleaner is immobile or very slow.	<ul style="list-style-type: none"> <li>• Check that your pool's bottom plug is fully closed.</li> <li>• Clean and empty the skimmer baskets and the pump's pre-filter.</li> <li>• Check that the debris does not slow down or stop the motor's operation (see § "4.3 I Removing debris from the motor")</li> <li>• Remove the suction adaptor under the cleaner (see § "3.5 I Choice of suction mode: small or large debris (according to model)").</li> <li>• Check the flow (see § "3.4 I Adjusting the water flow").</li> <li>• Check that there is no air in the system. If the level of water in the pump's pre-filter falls or if there are a lot of air bubbles from the discharge nozzles, this means that there is air in the system. Check the hose conditions and check the filtration pipes.</li> <li>• Check that the pool coating is not covered with algae which make the surface slippy and affect the cleaner's traction. If it is, carry out shock chlorination and slightly reduce the pH.</li> </ul>
The cleaner does not move everywhere in the pool.	<ul style="list-style-type: none"> <li>• Check the flow (see § "3.4 I Adjusting the water flow").</li> <li>• Check that the discharge nozzles are pointing downwards.</li> <li>• Check that the hose is not folded or rolled up. Leave it to dry flat if necessary.</li> <li>• Check that the hose is long enough (see § "2.2 I Hose section assembly"). If it is not, add hose sections.</li> <li>• Check that the hose floater is correctly positioned (see § "2.2 I Hose section assembly").</li> <li>• Monitor the cleaner for more than five minutes and check that each track changes direction regularly.</li> </ul>
The cleaner is stopped on the steps.	<ul style="list-style-type: none"> <li>• Make sure the rotating seal on the top of the cleaner turns freely.</li> <li>• Test the flow by checking the wheel rotation speed (see § "3.4.1 Checking the wheel rotation speed").</li> <li>• Check that the hose is not too long (see § "2.2 I Hose section assembly"). If it is, shorten it by removing sections.</li> </ul>
The cleaner does not climb the pool sides	<ul style="list-style-type: none"> <li>• Check the flow (see § "3.4 I Adjusting the water flow") and increase it if necessary (see § "3.4.2 Adjusting the water flow").</li> <li>• Check that the hose floater is correctly positioned (see § "2.2 I Hose section assembly").</li> <li>• Check that the sides are not slippy (caused by algae).</li> </ul>
The cleaner goes beyond the water level.	<ul style="list-style-type: none"> <li>• Reduce the flow (see § "3.4.2 Adjusting the water flow").</li> <li>• Check that the hose floater is correctly positioned (see § "2.2 I Hose section assembly").</li> </ul>
The cleaner is on the side.	<ul style="list-style-type: none"> <li>• Check that the hose floater is correctly positioned.</li> </ul>

Votre revendeur  
*Your retailer*

Modèle appareil  
*Appliance model*

Numéro de série  
*Serial number*


Trouvez plus d'informations et enregistrez votre produit sur  
*More informations and register you product on*

**[www.zodiac.com](http://www.zodiac.com)**

