

coverseal

AFTER CARE FOR COVERSEAL

Maintenance and cleaning

A.1 THE MEMBRANE

- Minimum of twice a year depending on pool surroundings (presence of trees, sand, earth, etc.).
- It must be cleaned before re-opening and restarting your pool following winterisation.
- Ideally, a household high pressure cleaner should be used, limiting the pressure to 80 bars.
- **Never use** alcohol, solvents, acidic or corrosive products to clean the cover, only water and a sponge or a soft brush. **Do not use** abrasive tools.
- For cleaning, the cover must be completely closed and locked.

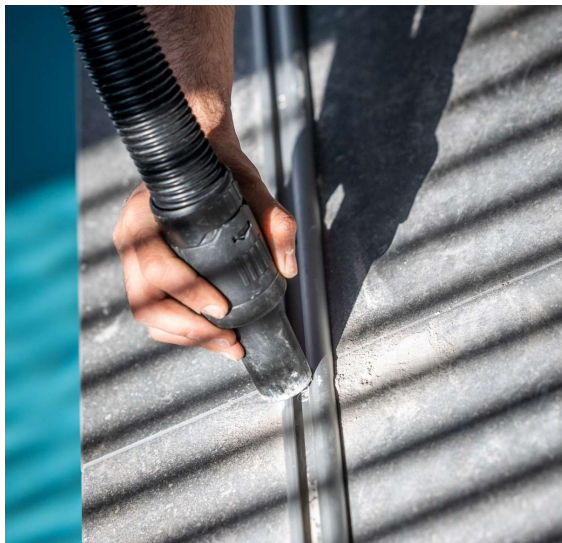


AFTER CARE FOR COVERSEAL

Maintenance and cleaning

A.2 THE RAILS

- Regular cleaning of the inside of the rails to remove all dirt, dust, earth, sand, tree needles or other foreign bodies is required.
- Must be carried out with the cover in the open position.
- Cleaning should be done using a vacuum cleaner/blower first and then a water jet to finish off, if necessary.
- To clean, gently lift the black conveyor (belt). It is imperative to then replace the conveyor correctly in the rail. If the conveyor is not properly replaced, it may lead your Coverseal to jam.
- Be careful not to accumulate dirt in the rails after opening and closing the cover

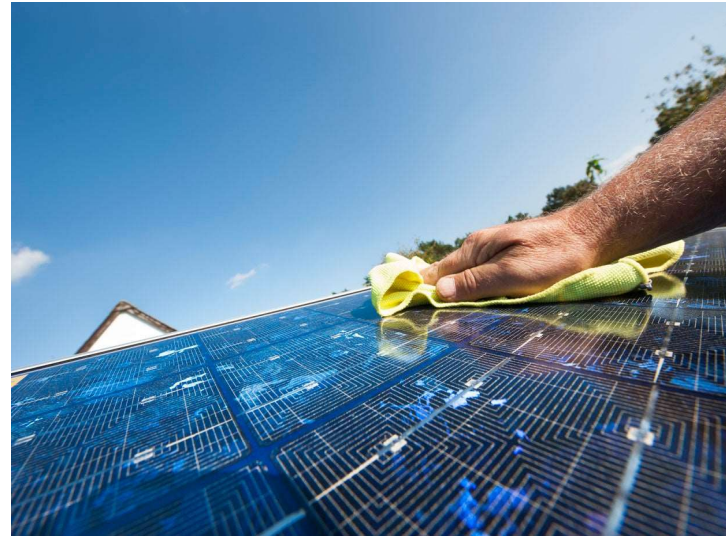


AFTER CARE FOR COVERSEAL

Maintenance and cleaning

A.3 PHOTOVOLTAIC PANELS (Automatic Models)

- When dirty, clean the photovoltaic panels using a “chamois” type cloth and glass cleaner.
- Regular maintenance of the photovoltaic panels increases battery service life.
- **Do not** run a broom or stiff bristle brush over the photovoltaic panels



AFTER CARE FOR COVERSEAL

Maintenance and cleaning

A.4 BENEATH THE COMPLETE CASING AND ENGAGING PARTS

- It is essential, using a vacuum cleaner or a water jet, to clean the part beneath the casing in order to remove dirt, dust, leaves, sand, earth, etc. that has accumulated there, whether on the terrace itself, on the fabric or on the rails and mechanical parts

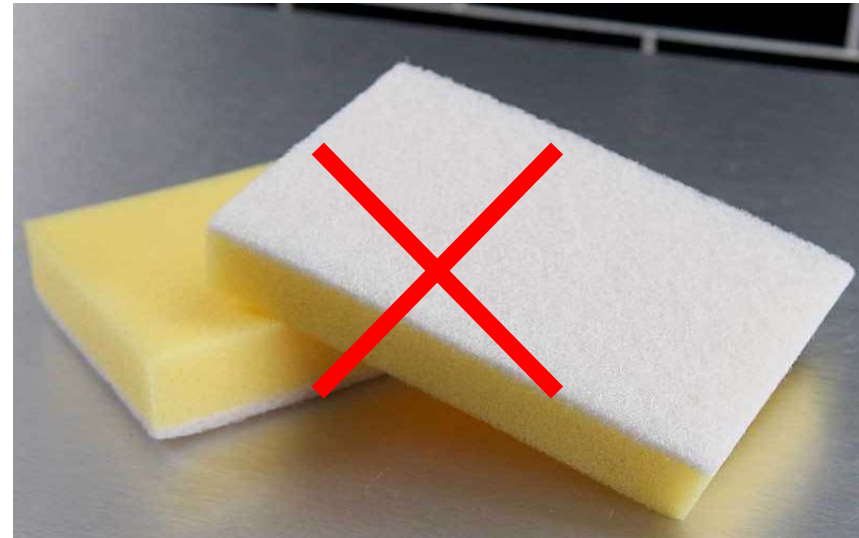


AFTER CARE FOR COVERSEAL

Maintenance and cleaning

A.5 PAINTED CASING

- Galvanized steel or aluminium casings are powder coated. This industrial painting principle guarantees a long lifespan.
- To clean the painted casing, use a “chamois” type cloth, water and neutral pH soap (washing-up liquid, partical-free).
- **Do not use** scouring wipes or sponges as they could cause irreparable scratches to the paint.

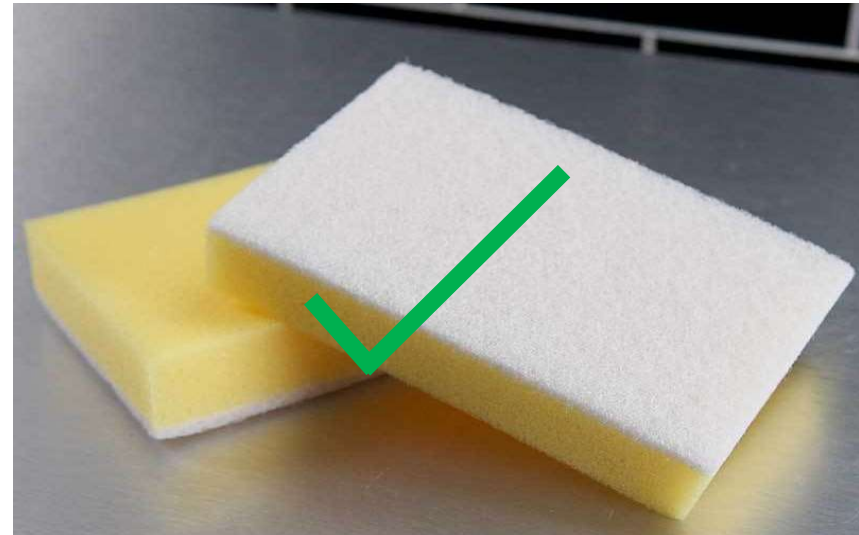
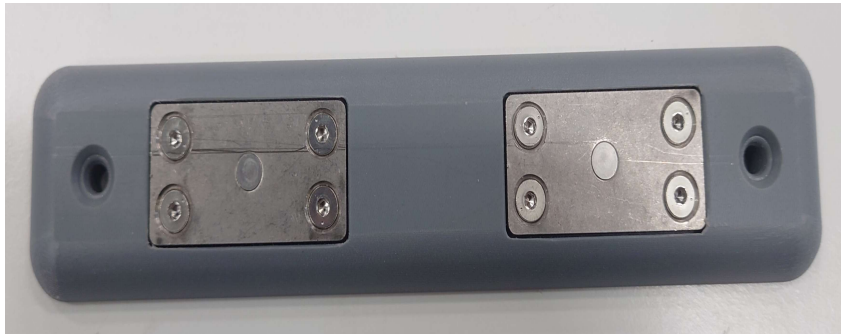


AFTER CARE FOR COVERSEAL

Maintenance and cleaning

A.6 INDOOR POOL MAINS CHARGING SYSTEM

- Regular maintenance of the charge terminal block ensures that the battery is charged correctly.
- Use the abrasive side of a dishwashing-type sponge or a nylon brush to remove any corrosion spots, a degreasing spray (for example: WÜRTH brand type 20 cleaner - Non corrosive cleaner with antistatic effect) to remove impurities and finally a silicone spray (SCO brand spray) supplied when installing your Coverseal to protect the terminal block.



AFTER CARE FOR COVERSEAL

Maintenance and cleaning

A.7 PRECAUTIONS IN CASE OF INSECTS

- The casing of the cover may, occasionally, be used as a place of refuge by certain insects (wasps, etc.). It is therefore advisable to check, especially in summer, that no nests have been made inside the casing, with a quick visual check opening the hatches. If necessary, call a professional pest exterminator.

